



NHS & Local Government

Quality and Efficiency Scorecard for Frail Elderly

Halton Locality Scorecard

March 2014

## Contents

**Page 1** Halton trend analysis graphs for measures (a) and (b)

**Page 2** Halton trend analysis graphs for measures (c) and (d)

**Page 3** Halton trend analysis graphs for measures (e) and (f)

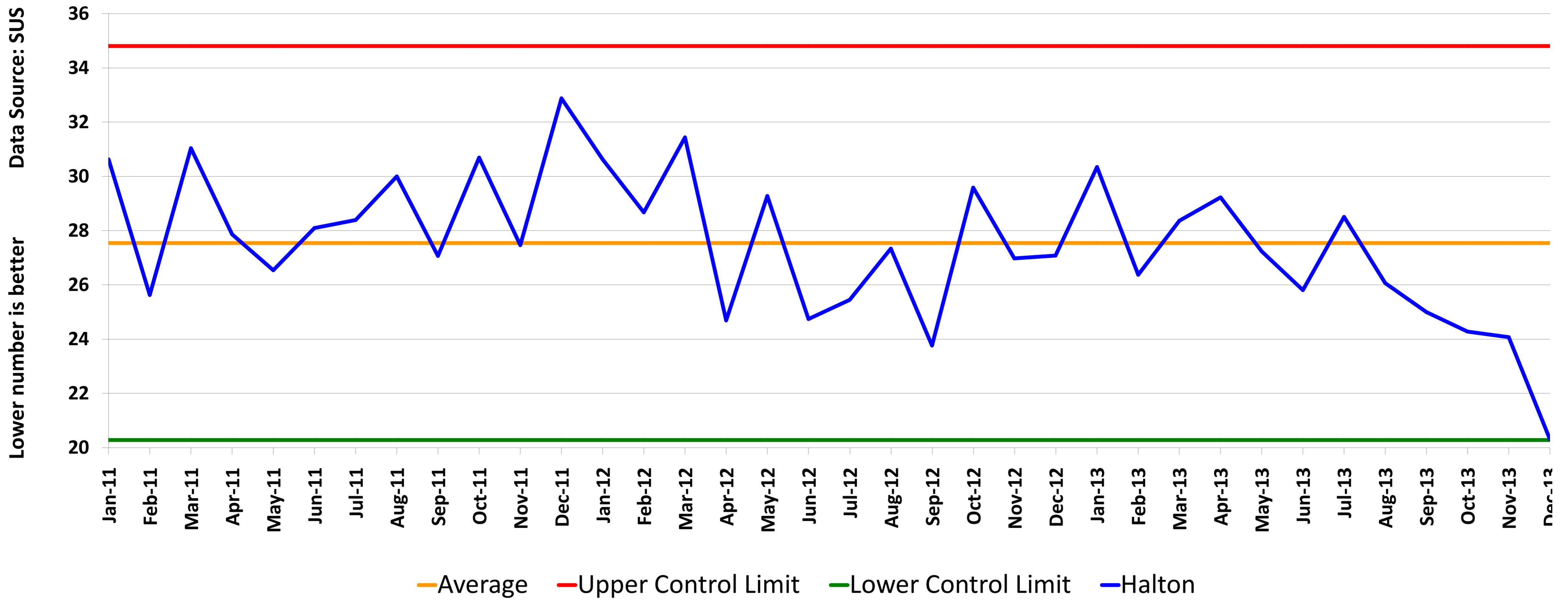
**Page 4** Halton trend analysis graphs for measures (g) and (i)

**Page 5** Metadata for measures in the locality scorecard

PLEASE SEE DATA CAVEATS ON PG 5

Graphs (a) and (b)

(a) Non-elective admissions aged 65+ per 1000 population 65+

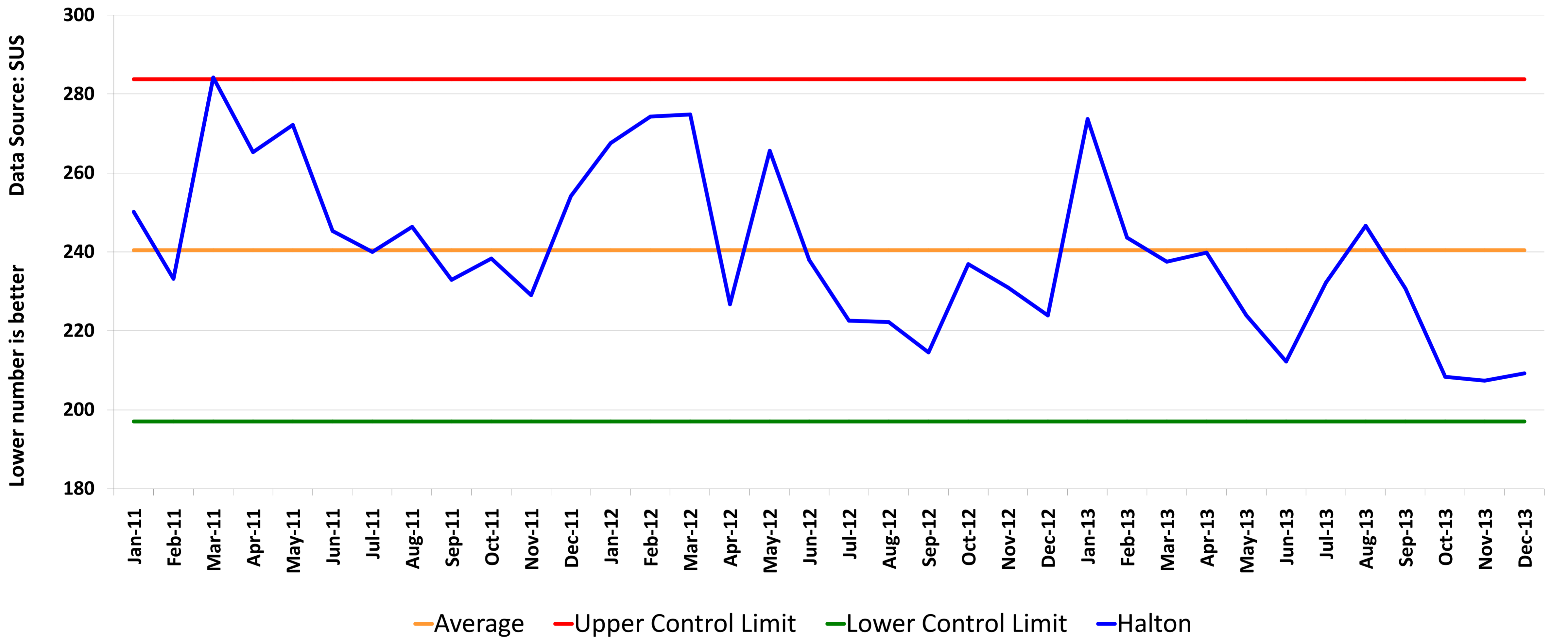


Actual	20.3
--------	------

Trend	
-------	--

NW Rank	20 of 23
---------	----------

(b) Non-elective bed days aged 65+ per 1000 population 65+



Actual	209.3
--------	-------

Trend	
-------	--

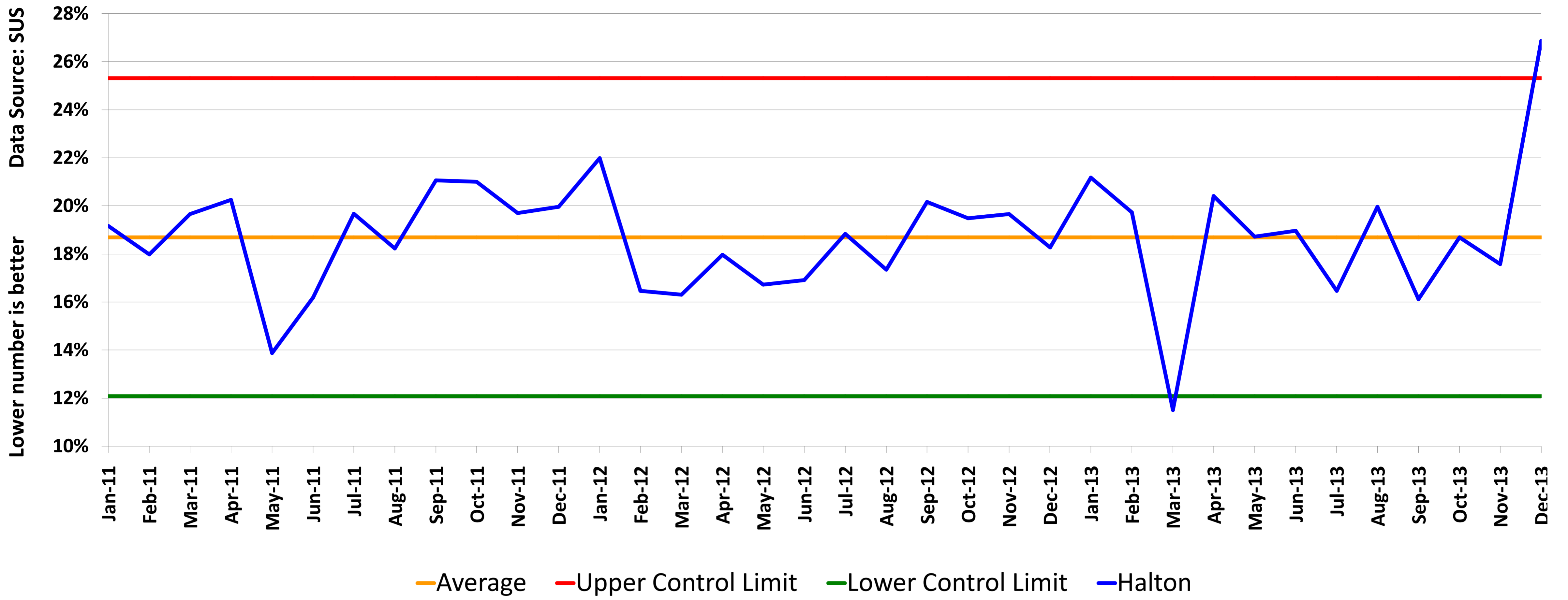
NW Rank	19 of 23
---------	----------

PLEASE SEE DATA CAVEATS ON PG 5



Graphs (c) and (d)

(c) Non-elective re-admission rate within 30 days aged 65+

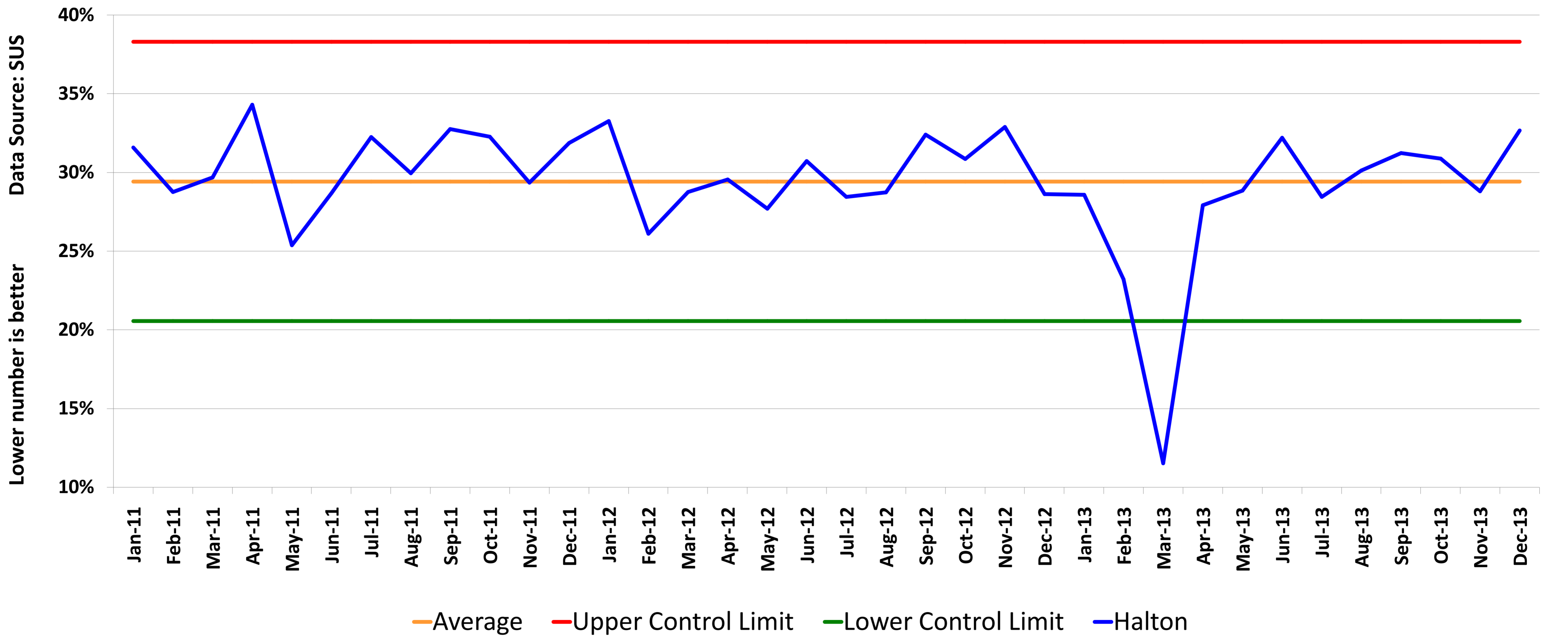


Actual	26.88%
--------	--------

Trend	
-------	--

NW Rank	18 of 23
---------	----------

(d) Non-elective re-admission rate within 90 days aged 65+



Actual	32.66%
--------	--------

Trend	
-------	--

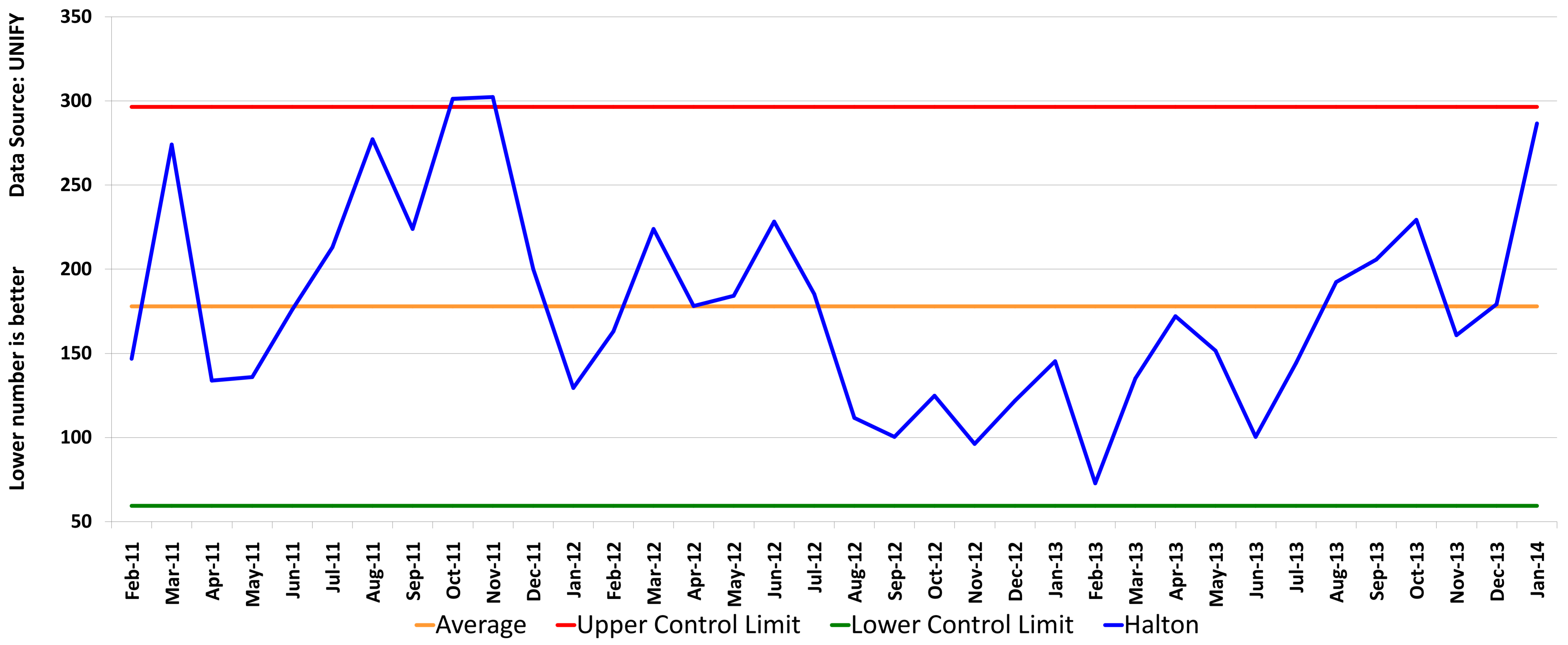
NW Rank	18 of 23
---------	----------

PLEASE SEE DATA CAVEATS ON PG 5

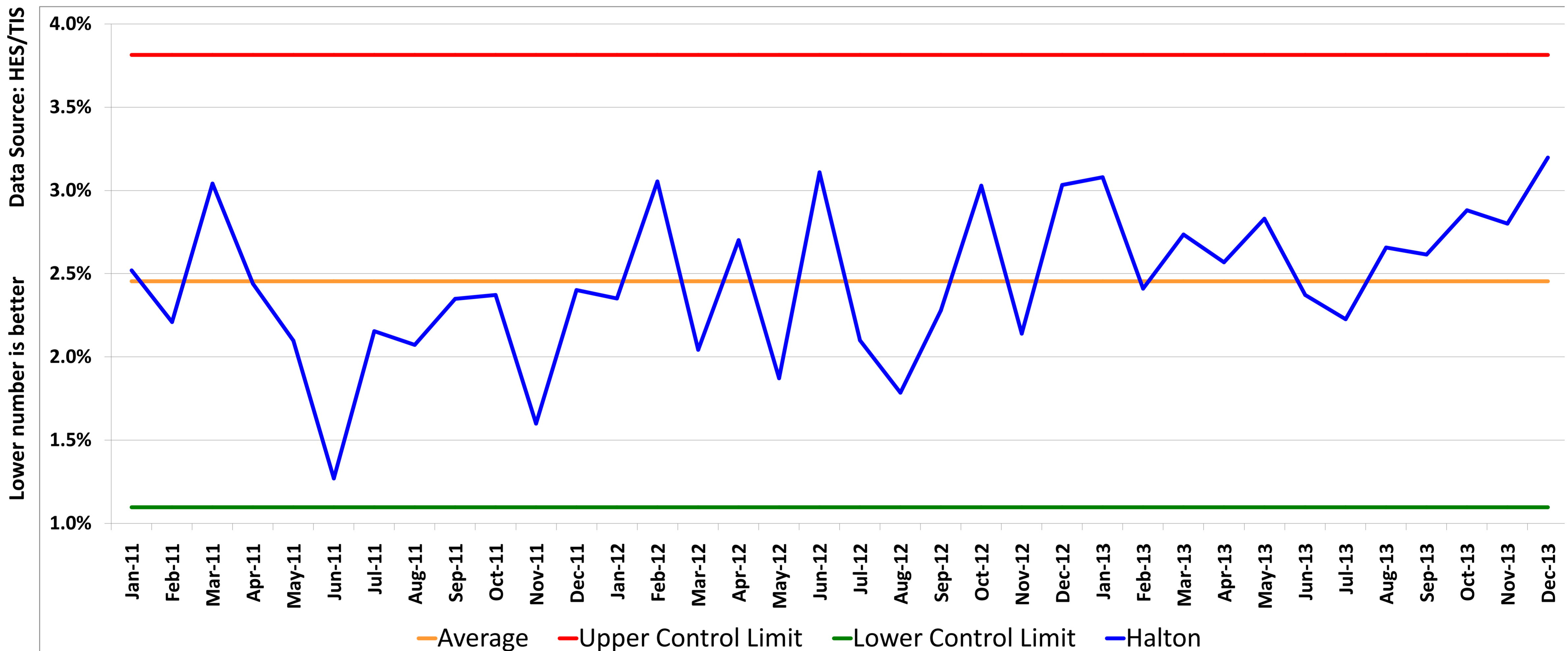


Graphs (e) and (f)

(e) Delayed Transfers of Care aged 18+ per 100,000 population aged 18+



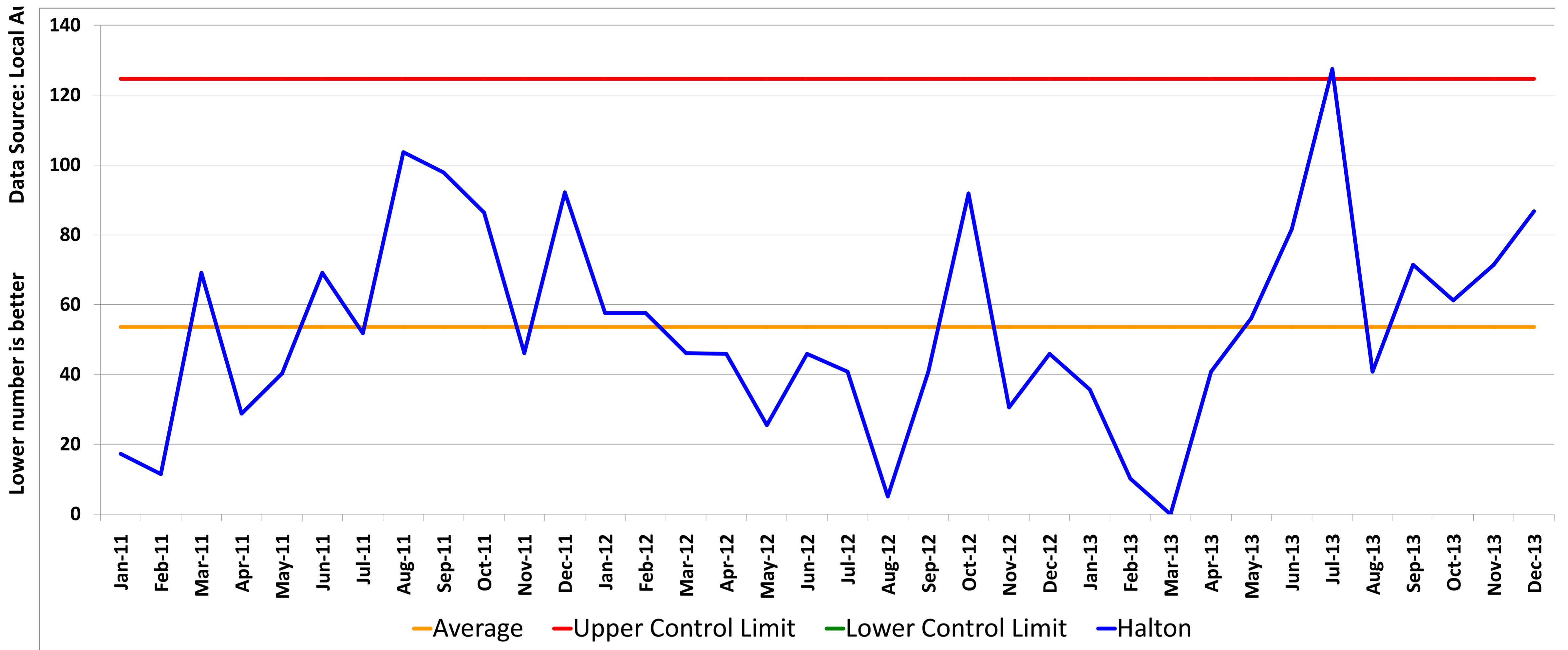
(f) Proportion of people aged 65+ discharged direct to residential care



PLEASE SEE DATA CAVEATS ON PG 5

Graphs (g) and (i)

(g) Permanent admissions to residential/nursing care aged 65+ per 100,000 population aged 65+

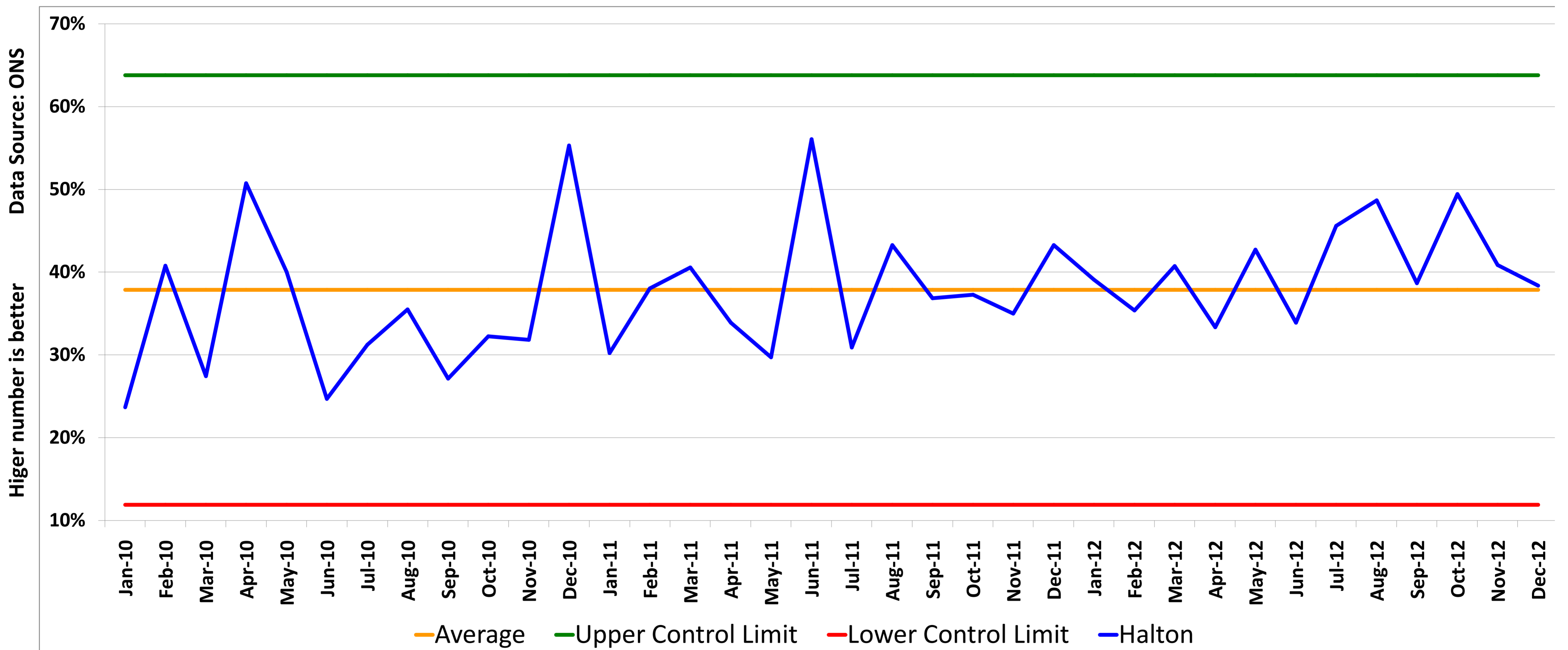


Actual 86.7

Trend

NW Rank 4 of 23

(i) Proportion of all deaths which occur at home / in care homes aged 65+



Actual 38.4%

Trend

NW Rank 17 of 23

PLEASE SEE DATA CAVEATS ON PG 5

## METADATA for the measures in the ADASS / AQUA whole system quality and efficiency locality scorecard

Measure name	Data Source	Geography/Location	Data parameters/specification for source data	Data equation/calculation	Date range	Data Caveats
(a) Non-elective admissions aged 65+ per 1000 population aged 65+	SUS	By local authority boundary based on the address of the patient	Number of non-elective admissions to any hospital of patients aged 65 and over living within the local authority area.	1. non-elective admissions aged 65 and over / population 65 and over *1000	Jan 11 - Dec 13	<p>All of the data for measures (a)-(d) is extracted from the SUS data system and so the last two months data are potentially subject to significant change. The last month of this data will have two more refreshes from local systems onto SUS and the data from the second to last month will have a final refresh. This will effect the data in this scorecard for these measures meaning admissions, bed days and repeats may appear lower or higher than they will actually be. THE DATA IN THIS SCORECARD FOR MEASURES (c) AND (d) WILL BE DIFFERENT TO THE APRIL-11 DRAFT VERSION DUE TO A CHANGE OF METHODOLOGY FOR CALCULATING REPEATS</p> <p>From April 2013 Cumbria is accessed via PbR tables. These only contain data for Cumbria CCG patients and may exclude small numbers of Local Authority residents.</p>
(b) Non-elective bed days aged 65+ per 1000 population aged 65+	SUS	By local authority boundary based on the address of the patient	Number of non-elective bed days in any hospital of patients aged 65 and over living within the local authority area.	2. emergency bed days aged 65 and over / population 65 and over *1000	Jan 11 - Dec 13	
(c) Non-elective re-admission rate within 30 days aged 65+	SUS	By local authority boundary based on the address of the patient	Number of non-elective re-admission episodes within 30 days in any hospital of patients aged 65 and over living within the local authority area.	3. non-elective readmissions in 30 days aged 65 and over / 1. non-elective admissions	Jan 11 - Dec 13	
(d) Non-elective re-admission rate within 90 days aged 65+	SUS	By local authority boundary based on the address of the patient	Number of non-elective re-admission episodes within 90 days in any hospital of patients aged 65 and over living within the local authority area.	4. non-elective readmissions in 90 days aged 65 and over / 1. non-elective admissions	Jan 11 - Dec 13	
(e) No of delayed transfers of care aged 18+ per 100,000 population aged 18+	Monthly DTOC collections from provider trusts from the Unify System	By local authority boundary based on the address of the patient	DTOC bed days for month including acute and non acute, and DTOC for any reason and any organisation being responsible. This data is for people aged 18 and over only.	5. all delayed transfer of care bed days aged 18 and over / population 18 and over *100,000	Jan 14 Bed Days	This data can be accessed at the DH at the following website: <a href="http://transparency.dh.gov.uk/2012/06/21/dtoc-information/">http://transparency.dh.gov.uk/2012/06/21/dtoc-information/</a>
(f) Proportion of people aged 65+ discharged direct to residential care	SUS	By local authority boundary based on the address of the patient	Number of people aged 65 and over with a discharge code of 54. NHS run care home, 65. Local Authority residential accommodation i.e. where care is provided, 85. Non-NHS (other than Local Authority) run care home	6. total for codes 54, 65 and 85 / total of all discharges	Jan 11 - Dec 13	The data for the last twelve months can be subject to change throughout the year so it may appear differently to previous refreshes of the scorecard. This data could include self funders of residential care. Some patients/service users may have lived in a different authority to the one in which they enter residential care.
(g) Permanent admissions to residential/nursing care aged 65+ per 100,000 population aged 65+	Collected from individual local authorities	By local authority boundary based on the address of the patient	Number of LA supported PERMANENT admissions aged 65 and over to residential care, nursing care and adult placements (excluding admissions to group homes),	7. Admissions to res care aged 65 and over / population 65 and over *100,000	Jan 11 - Dec 13	This data is collected directly from local authorities and has not all been verified by the Information Centre NHS so is subject to change
(i) Proportion of all deaths which occur at home / in care homes - aged 65+	Office of National Statistics (ONS) via NHS North West	By local authority boundary based on the address of the patient	Proportion of deaths occurring at home aged 65 and over. All deaths aged 65 and over	8. Proportion of deaths occurring at home or in care homes aged 65 and over / 9. all deaths aged 65 and over	Jan 10 - Dec 12	This data has not been accessible since December 2012